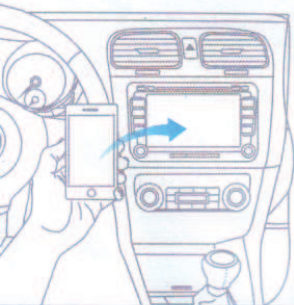
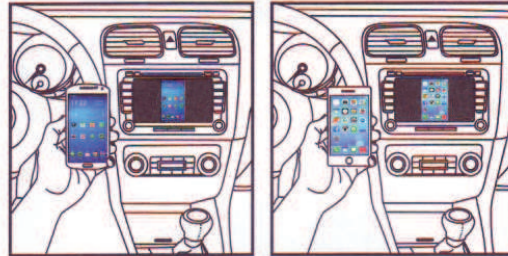


QUICK START GUIDE

Car Audio Wi-Fi A/V mirror converter



1. Introduction

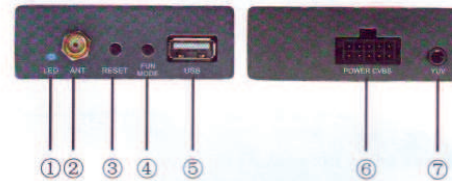


This is a professional car standard Wi-Fi A/V mirror converter of Smart Phone to Car Audio which transfers the audio and video of smart phone or pad (live screen) to Car Audio player. With this device, user can enjoy

all applications & contents of smart phone in car:

- On line navigation (advanced functions: TMC, location share, free map upgrade)
- Music listening and video watching
- Internet surf (movies-watching, news-browsing, twitter, Google talking)
- Games playing

2. Interface



1. Power Led: Blue light on when power on.
2. Antenna SMA Connector: Connect External Wi-Fi Antenna.
3. Reset: - Press 1 second for reset.
- Press 5 seconds for factory default settings recovery.
4. Fun: For factory service.
MODE: For Manual switch MiraBox.
- Press 1 second for switching between Airplay and Miracast.
5. USB: Charge (5V/1A)
6. Power/AV-IN:
- Power Cable connect to Car Audio ACC/GND
- CVBS Cable connect to Car Audio AUX/AV-IN (RCA Yellow, White & Red)
7. YUV: 3.5mm YUV video output. (YUV cable is optional)

3. Accessories and Installation

3.1 Standard Accessories (for universal Car Audio AUX /AV-IN input)

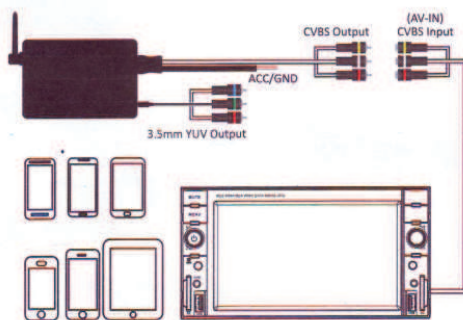


3.2 Optional Accessories (for Car Audio with YUV input)



YUV Cable

3.3 Installation



4. Technical Specification

Power Input	DC 12V
Power consumption	Idle Status: 200mA Without WiFi connection
	Working Status: 500mA With WiFi connection
	Charging Status: 1A With USB port Charging Device
Wi-Fi Standard	Wi-Fi 802.11 b/g/n
Input	WiFi AirPlay/Miracast/Allsharecast/Screen Mirroring/DLNA
A/V Output	Car Audio AUX /AV-IN (CVBS) / YUV (Optional)
Temperature Range	-20°C ~ 70°C
Humidity	0~90%

5. Wi-Fi mirror converter Support Device:

iOS 8,7&6 or later Device	Use AirPlay Mirroring, you need the following devices:
	iPhone 4S / 5 / 5C / 5S / 6 / 6 Plus or later
	iPad 2 / 3 / 4 / Air or later
	iPad mini / mini Air or later
Android Device	iPod touch (5th generation)
	Use Miracast / WLAN Display / Allshare cast / Screen Mirroring devices
	Samsung Note2, Note3, Note 10.1, S3, S4, S5.
	LG F180L, F200L, LS970, F180S, F180K, F200S, F200K, GL-01E, G E975T
	HTC OneX, OneS, Butterfly S
Google Nexus 4	
Other Android device with Miracast function, Normally require Android system 4.2 or later	

6. How to link

6.1 IOS System.

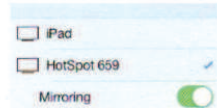
IOS 7 & 8 Device:

1. Settings > Wi-Fi > On > Choose a Network...> Select "HotSpot****"
Connect your iOS device Wi-Fi to the mirror converter
2. Swipe up from the bottom of your screen to access Control Center. Tap AirPlay



If you can't see the AirPlay icon, please ensure your device is successful connect with mirror converter.

3. Turn on Mirroring: On AirPlay screen, then tap Mirroring.



4. Once enabled, your iOS device's screen will be mirrored on your Car Audio Screen.



If your device isn't using iOS 7 & 8

1. Settings > Wi-Fi > On > Choose a Network...> Select "HotSpot****"
Connect your iOS device Wi-Fi to the mirror converter
2. On your iOS device, double-click the Home button to display your recently used apps.



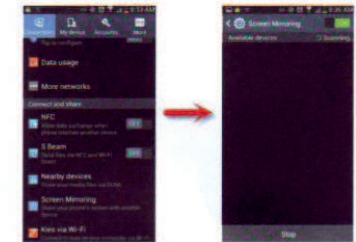
3. Swipe the recently used apps twice from left to right until you see the AirPlay icon: . If you don't see the AirPlay icon on your iOS device, your iOS device and mirror converter may not be connected successfully. Tap the AirPlay icon, , to display a list of available AirPlay devices.

4. To use AirPlay Mirroring, select the name of your Wi-Fi A/V mirror converter and turn Mirroring On.



6.2 Android System:

1. On your phone locate the Screen Mirroring setting and scan for compatible devices. This should take about 5 seconds or less.



2. Your phone will then list available devices, select your Wi-Fi A/V Converter model number to connect.

This should take about 5 seconds.



7. Important notes:

1. Doesn't require a network:

The WiFi A/V mirror converter uses a Wi-Fi direct connection and doesn't require a network connection from your player or phone to Car Audio.

2. Screen time out setting

If the screen time out setting is enabled on your phone and you phone times out, no image will display on Car Audio Screen until you access your phone screen again. 'Mirror' will continue to display on your player indicating connection status.

⚠ Cautions

1. Do not put this product on the heater or expose in the sunshine.
2. Do not impacts, extrusion, dismantle or impale this product.
3. Do not put this product into extreme high temperature or humidity environment.
4. Do not throw this product into water, fire or the caustic fluid.

8. Warranty Card

Warranty period:

Our Company's products quality warranty period is 12 months, the time start from the day which you purchase the product.

Free Service:

During the warranty period, any malfunction caused by the quality of the products itself, please take the purchase certificate and warranty card and get in touch with the agents, can get the free maintenance.

The following conditions are not free maintenance:

1. No warranty card, or has damaged the product labels.
2. Disassemble cause damage.
3. Because the water or drop caused by mechanical failure and human damage.
4. Due to force majeure cause damage or failure.